

WELCOME

TO

CPR

FIRST AID



POST Peace Officer First Aid/CPR/AED/AB-BB Pathogens Course

Introduction to EMS

Legal Principles of Emergency Care

Peace Officer Responsibilities At The Scene of An Emergency

Peace Officer Involvement

CASE STUDY # 1:

- Considerations Upon Arrival- E.P.C.R.



CONSIDER YOUR E. P. C. R.'s

- Initial evaluation
- Protection of personnel, public and victim safety
- Immediate care and treatment
- Initiating requests for additional resources, as needed



Scene Response & Evaluation

Setting Priorities at the Scene - E. S. R. S. A. V. I. P.

- Situation EVALUATION
- Personal, public, victim SAFETY
- Requesting additional RESOURCES
- SCENE control
- Victim ASSESSMENT (prioritizing)
- Basic VICTIM CARE
- Witness/involved party IDENTIFICATION
- Evidence PRESERVATION



ISSUES RELATED TO CONSENT

- An adult victim has the right to REFUSE TREATMENT
- Consent is IMPLIED if the victim is unconscious
- Where the victim's untreated condition is degenerating to a LIFE-THREATENING LEVEL, you have a responsibility to act regardless of non-consent or flat refusal.



- You have a SPECIAL RESPONSIBILITY to provide care within the scope of your training
- You are protected from lawsuits if you act in good faith providing this standard of care to the best of your ability within the scope of your training.

BUREAU OF INVESTIGATION



- If you do not provide this standard of care, you could be found negligent.
- Once treatment is initiated, you must remain with the victim until relieved by someone of equal or higher training

VICTIM ASSESSMENT

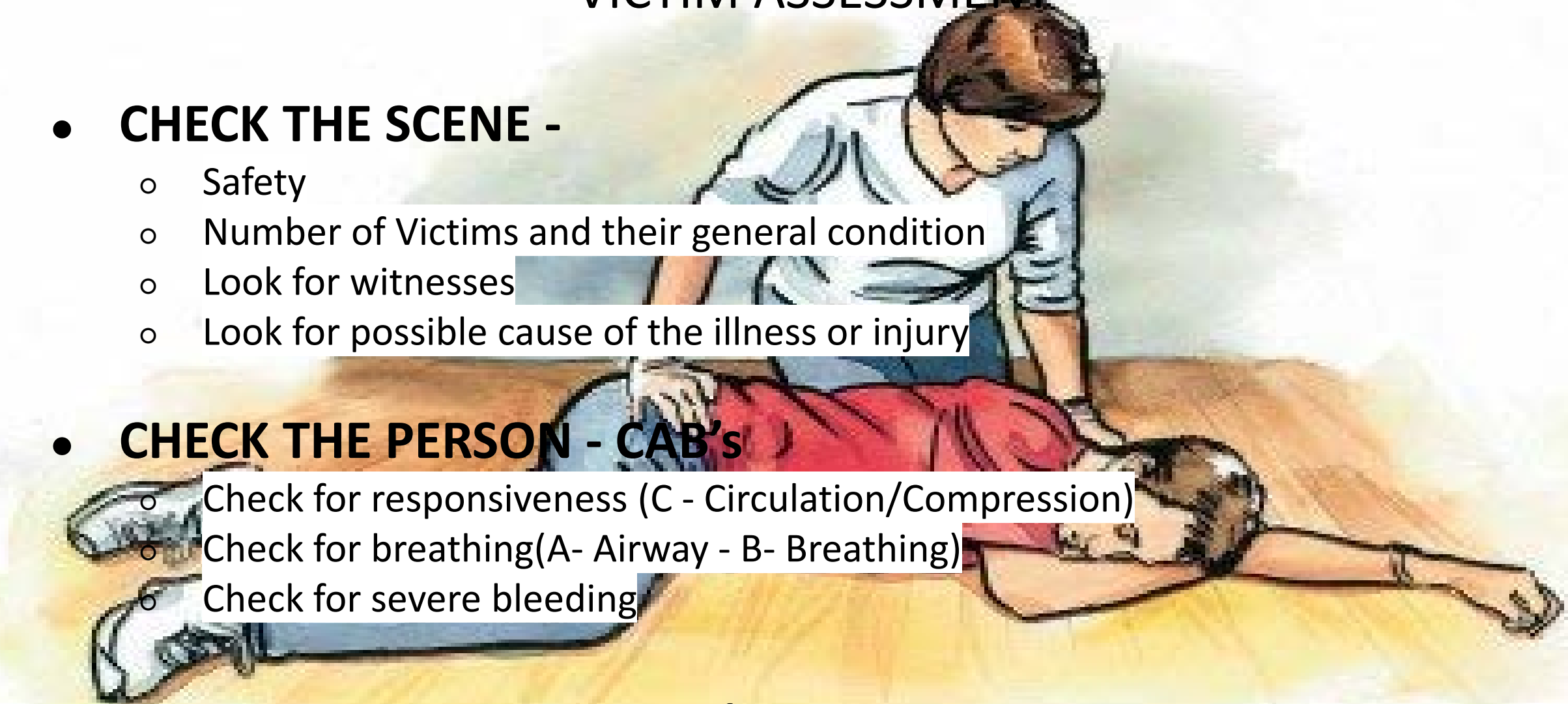
- **CHECK THE SCENE -**

- Safety
- Number of Victims and their general condition
- Look for witnesses
- Look for possible cause of the illness or injury

- **CHECK THE PERSON - CAB's**

- Check for responsiveness (C - Circulation/Compression)
- Check for breathing (A- Airway - B- Breathing)
- Check for severe bleeding

- **CONTINUE CHECKING CAB'S**



Assess for Danger

- **INITIAL ASSESSMENT**

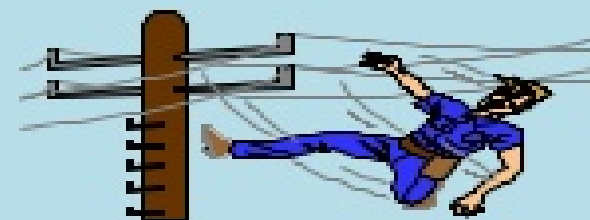
- Check CAB's
- Control Major Bleeding
- Treat for Shock



Fire &



Vehicles



Electricity



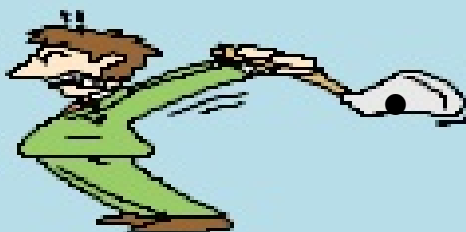
Water



Chemicals

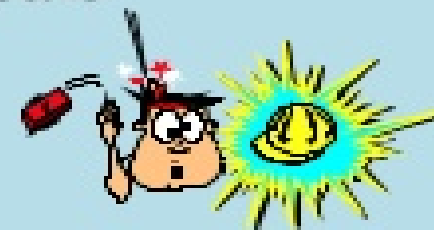


People



FOCUSED SURVEY -

- Check Vital Signs
- Check Head to toe, & machinery



MULTIPLE VICTIM ASSESSMENT/TRIAGE

A photograph of a multi-car pile-up on a highway. Several vehicles are involved in a collision, with debris scattered around. Emergency responders are visible, and several triage tents are set up on the scene. The scene is busy with activity, and the overall atmosphere is one of a major emergency response.

MINOR - Direct to a safe location away from other victims and hazards

DELAYED - Receives treatment once all victims are classified and IMMEDIATE class have been treated

IMMEDIATE - Receives treatment first once all victims are classified

NON-SALVAGEABLE - DECEASED