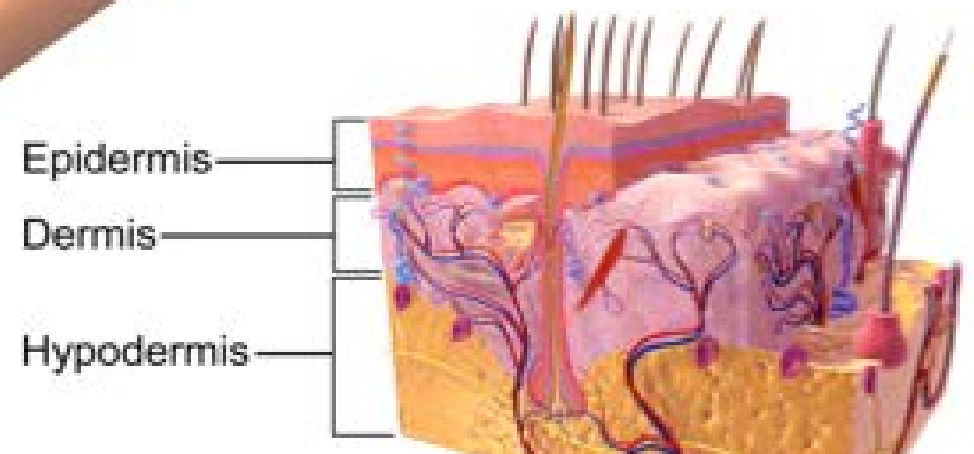


Range from Mild to Severe
 Are classified by depth
 (how many skin layers affected)



BURNS

1st degree/Superficial Burn
 Affects only the outer layer of skin (**sunburn**)

SYMPTOMS
 pain
 redness
 swelling

First-degree burn

2nd degree (Partial Thickness) Burn
 Affects both the outer and underlying layer of the skin (**most painful burn**)

SYMPTOMS
 pain
 redness
 swelling
 blistering

Second-degree burn

3rd degree (Full Thickness) Burn
least painful/most serious
 Affects DEEP layers of skin

SYMPTOMS
 white or blackened skin
 area maybe numb

CAN BE LIFE
 THREATENING
Third-degree burn

TREATMENT

Thermal/Heat Burns

Check Scene Safety

Activate EMS

Remove from heat source

Cool area w/water

Apply dry sterile dressing
and loose bandage

Treat for shock

Monitor Airway/Breathing

Chemcial Burns

Check Scene Safety

Activate EMS

Brush away dry powder
Flush w/water 15-30min
Remove clothing/jewelry
Apply dry, sterile dressing
Monitor Airway Breathing

Wet or Liquid Chemicals

Flush with water 15-30min
Remove clothing/jewelry
Apply dry, sterile dressing
Monitor Airway/Breathing

Electrical Burns

Check Scene Safety

Turn off power

Activate EMS

Sterile Bandage/Ointment

Monitor Airway/Breathing

Radiation Burns

Check Scene Safety

Activate EMS

Wear PPE Clothing/Gear

Monitor Airway/Breathing

Remove all exposed clothing,
jewelry and seal in plastic bag

Apply antibiotic ointment

Put damp covering over burn

Follow decontamination/rinse
procedures/body wash, etc.